

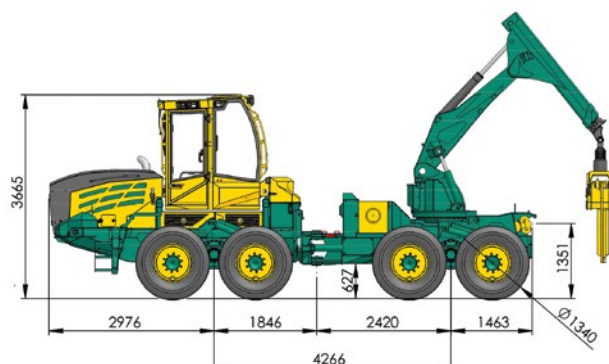


HSM 208Z 8WD special forestry hauler



Technik die Freude macht.

208Z



Engine:

- VOLVO PENTA
TAD881VE EU Stage V
Power: 185 kW (252 HP) at 1600 rpm
max. revolution: 1150 Nm at 1100 - 1500 rpm
max. torque: 1175 Nm at 1400 rpm
Displacement: 7,7 liter
- Optional:
- VOLVO PENTA
TAD882VE EU Stage V
Power: 210 kW (286 HP) at 1700 rpm
max. revolution: 1225 Nm at 1100 - 1600 rpm
max. torque: 1255 Nm at 1400 rpm
Displacement: 7,7 liter

Power train:

- NAF 2 speed transfer gearbox
- HSM High Speed Drive (serial 71); speed at 1st gear 0-14 km/h

Brake:

- brake with 2-circles, oil-cooled multiple-disc power-brake
- spring accumulator - parking brake

Steering:

- articulated frame steering with 2 cylinders
- 45° steering angle

Hydraulic system:

- load sensing
- Variable pump (working pump):
Fördermenge: 304 l/min at 1600 rpm
Druck: up to max. 350 bar
- hydraulic oil: saturated, synthetic ester Panolin HLP SYNTH with Kleenoil microfiltration; WGK 1

Tank capacity:

- diesel: 190 l
- AdBlue: 45 l
- hydraulic oil: 130 l

Winches:

- Serial: Adler double-drum-winch HY 20 (2x100 kN)
max. rope capacity 100 m at 14 mm
- Optional: Adler double-drum-winch HY 24 SG (2x120 kN)
max. rope capacity 130 m at 14 mm
Adler double-drum-winch HY 32 L-SG (2x160 kN)
max. rope capacity 100 m at 16 mm

Waicht:

- 19000 kg (serial)

Cabin:

- raisable to side on parallel linkages
- ROPS, FOPS, OPS tested
- rotary seat with pedals in front and rear
- wiper in front and rear, optional on the side
- air cushioned seat with seat heating
- hot-water heating
- air conditioning

Electrical system / Instruments:

- HSM Ecomand colour-display
- 5 operator programs + factory setting
- diagnosis-tool and error-indication
- graphic support at parameter editing
- generator 110 A (28 V)
- 2 service-free dry batteries à 75 Ah

Standard equipment:

- 14 LED-working headlight at cabin
- 4 working headlights at crane
- potential transformer 24 V - 12 V
- radio with CD, fire extinguisher, first aid kit, warning triangle, tool kit, cooling box
- reversing camera with color monitor
- rear headlights
- twist lock with 2 hydraulic cylinders

Special equipment:

- Front dozer-blade
- Straight shield with sprag brake
- Hydraulically height-adjustable roller block
- Tandem axle lift (Bogielift) in front and rear
- „Skidder France“ version pulley
- Auxiliary heating
- Radio control for winch
- Drive by radio
- Sun blinds
- Hydraulic oil preheating
- cab suspension
- Additional accessories on request

Forwarder:

- Articulated arm with double telescope: 7,3 m range
- Gross lifting moment: 260 kNm
- Swivel range: 255°
- Pivoting moment: 80 kNm
- Gripper cross-section: 1,2 m²

HSM Hohenloher Spezial-
Maschinenbau GmbH & Co. KG

Technik die Freude macht.

D-74635 Neu-Kupfer
Im Greut 10
Tel. + 49 (0) 7944 / 9191-0
Fax + 49 (0) 7944 / 9191-77
Mail: info@hsm-forest.com
www.hsm-forest.com

